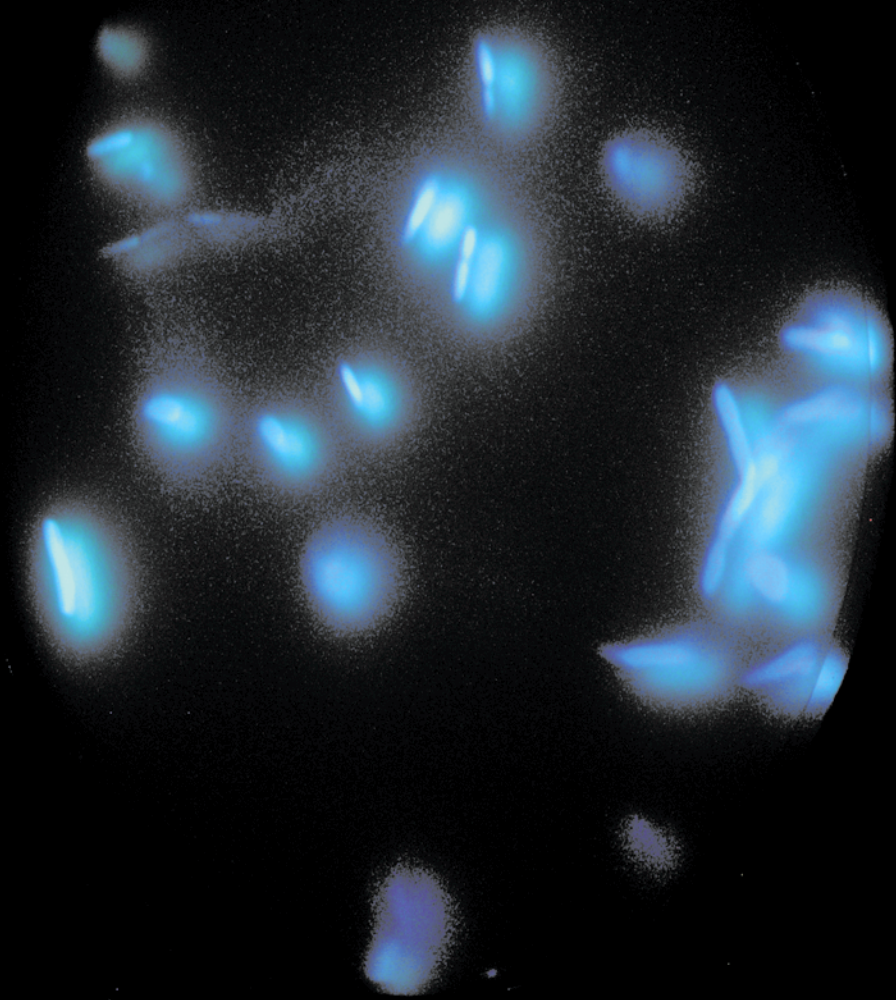
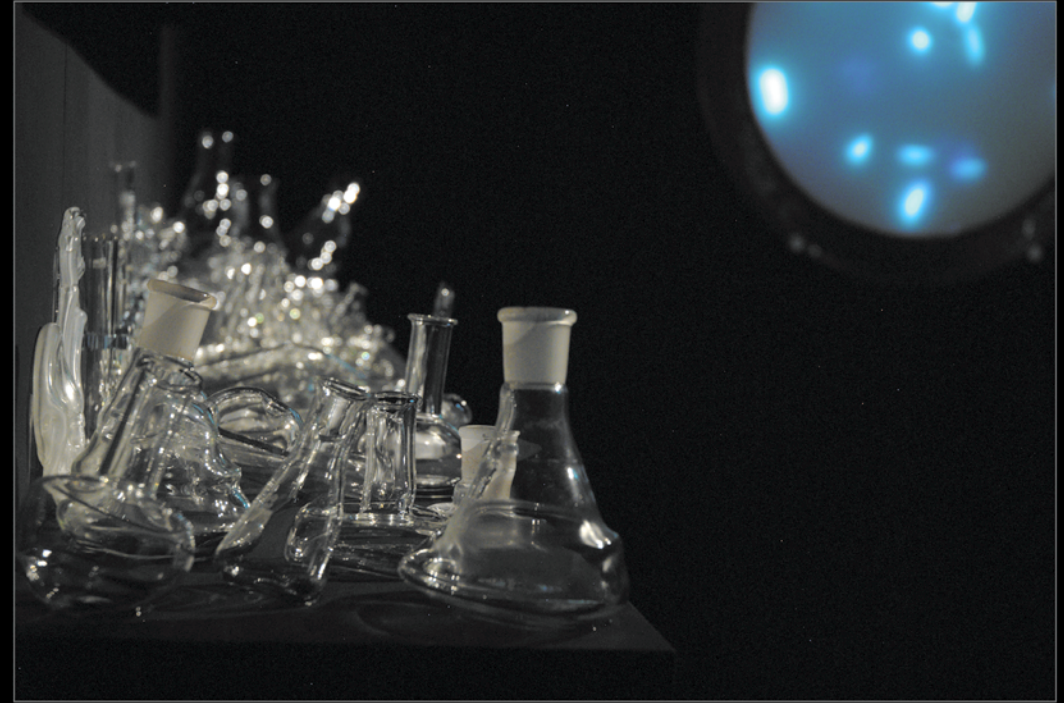
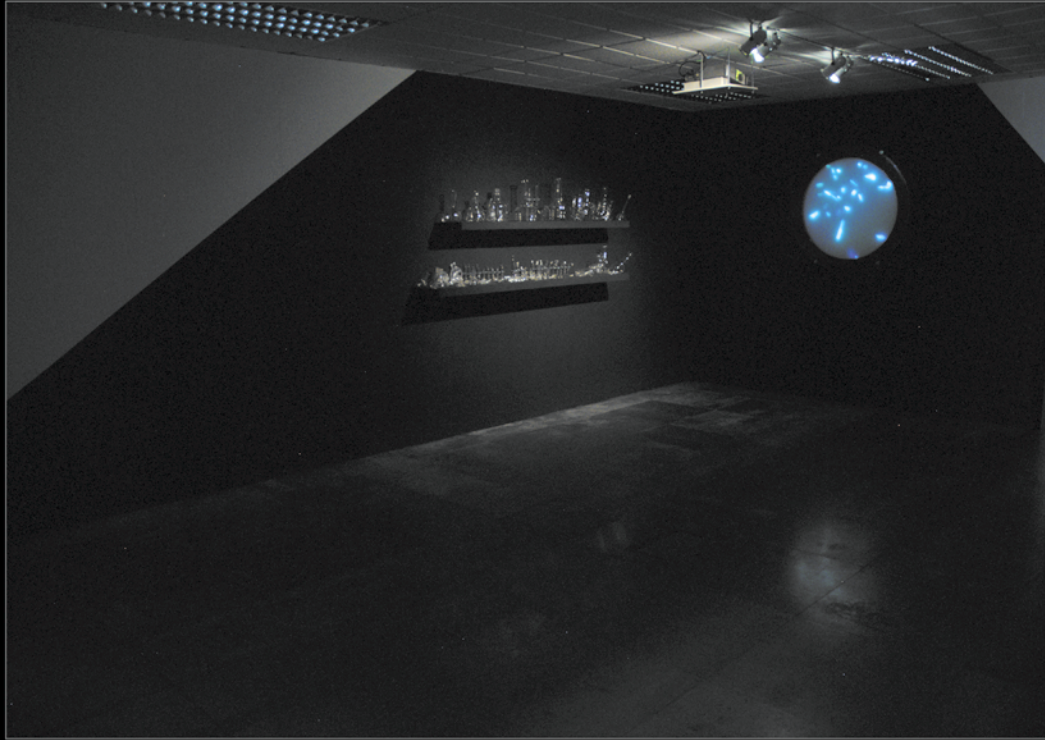
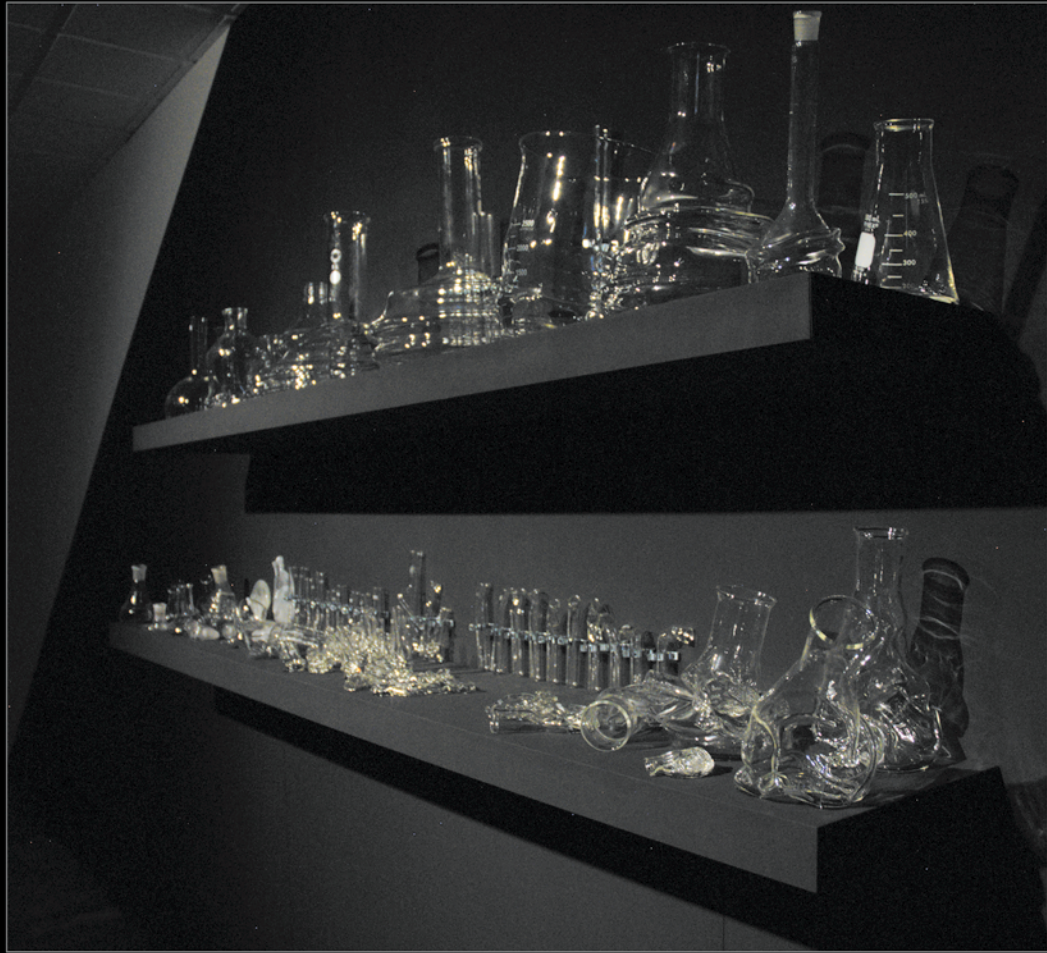


SUPER-NATURAL *pt.1*










EXHIBITION IMAGES

- 
24. Detail: hand-cast scrying mirror with Tituba projection.
 25. Installation view: scrying mirror with projection, manipulated scientific glass on shelving and painted walls.
 26. Detail: manipulated scientific glass and scrying mirror with projection.
 27. Detail: shelving with manipulated scientific glass.
 28. Detail: manipulated scientific glass on shelving.
 29. Detail: manipulated scientific glass on shelving.
 30. Detail: manipulated scientific glass on shelving.

INSTALLATION

Manipulated scientific borosilicate glass on shelving, hand-cast glass circular 'scrying mirror' with a circular projection constructed from 2,804 stills taken under ultra-violet blue light from time-lapse microscopy and walls painted with matt black theatre paint.

EXHIBITION

AV Festival, VANE Gallery, Newcastle-upon-Tyne, 2012.

Exhibition photography by Lindsay Duncanson, glass by Sarah Blood.